



WHERE OAKLAND SHINES

# Lighthouse Community Public Schools

Lighthouse Community Charter High School  
School Profile 2016-17

444 Hegenberger Road, Oakland, CA 94621  
Phone: (510) 562-8225, (510) 562-4227  
Fax: (510) 271-8803

CEEB Code: 054151 [www.lighthousecharter.org](http://www.lighthousecharter.org)

**Head of School:** Paul Koh

**9-12 Director:** Drea Beale

**College Counselor:** Joshua Weintraub



## School and Community:

Lighthouse Community Charter School (LCCS) is a tuition-free, public school committed to preparing every student for college and the career of their choice. LCCS currently serves approximately 800 students in grades K-12, including 260 high school students in grades 9 – 12. LCCS is celebrating its 15th year in 2016-17 and to date, has graduated eight classes of seniors, the vast majority of whom are either currently attending college or have completed a college degree.

## Students and Families:

Students who attend Lighthouse come from predominantly immigrant neighborhoods characterized by high unemployment, poverty, linguistic isolation, and low educational attainment rates. Recent data shows that about 21% of Oakland's high school students drop out before they reach graduation. Of those who make it to graduation, only 43% have taken the coursework to be eligible to continue their education in four-year colleges and universities. LCCS exists to counter these grave trends.<sup>1</sup>

**90% of LCCS graduates will be first in their family to go to college.** The Lighthouse educational program is set up to serve these students who face great obstacles in their pursuit of an excellent and equitable education. Of its students, 83% qualify for Free or Reduced Lunch and 78% are English Language Learners.

## Accolades:

- Lighthouse was recently named the top school in the San Francisco Bay Area for low-income students. (Innovate Public Schools and the San Jose Mercury News)
- In 2013, the California Charter Schools Association presented Lighthouse with the Hart Vision award as the charter school of the year.

The students of Lighthouse also represent the ethnic diversity of Oakland's neighborhoods. The composition of the student body is:

- 72% Latino
- 11% African-American
- 5% Asian
- 3% White
- 9% Other or Multiracial

## Faculty:

Individually and collectively, Lighthouse teachers are a distinguished and passionate team of professionals equipped with the knowledge, skills and character to ensure that all of our students have access to a rigorous and engaging college-preparatory education.

## To graduate from LCCS, students must also complete:

- An interview with a community member in 10th grade
- An internship at a local business/organization in 11th grade
- A senior project in 12th grade

<sup>1</sup>Oakland Unified School District Public Data Reports, <http://www.ousddata.org/community-members.html>, 9/11/15

## Graduation Requirements:

The table below outlines the graduation requirements at LCCS along with sample course offerings in all major subject areas.

subject area	sample course requirements	years required
A. Social Science	World History 1 & 2 US History & Government 1 & 2	4
B. English	World Lit & Comp. (Eng 9/10) American Lit & Comp (Eng11/12)	4
C. Mathematics	Algebra 1 & 2 Geometry Math Analysis Calculus & Stats	3
D. Lab Sciences	Biology Chemistry Physics Inquiry in Science	2
E. Foreign Language	Spanish 1 & 2, Spanish 3 Honors AP Spanish	2
F. Visual & Perf. Arts	Visual Art 1 Screen Printing Advanced Fine Arts	1
G. Other Electives	Honors Humanities Robotics Engineering AP Comp. Science Principles Design & Fabrication Lab Music and Advanced Music (Band) Ethnic Studies Interpersonal Communication	1

## Advanced Placement, Honors and College Classes:

As a school of limited size and resources and where curricular depth is prioritized over breadth, Lighthouse offers just two AP classes, AP Spanish and AP Computer Science Principles as well as one stand- alone Honors class, Honors Humanities. However, students in grades 9-12 may receive Honors credit in Math, Science and English classes by consistently completing more rigorous coursework than their peers. Lighthouse also encourages students to challenge themselves by taking college classes at local institutions and/or online as their schedule allows.

## Internships:

During the second semester of 11th grade, all juniors at LCCS participate in internships at a local business or organization of their choice. Each internship is tied to a student's academic interests and personal goals and culminates with a presentation to the community demonstrating what they learned from this experience.

## Senior Project:

During 12th grade, all seniors at LCCS must research, develop and carry out an in-depth project on a topic of interest to them.

"One of the first things I am going to do when I get to college is find the **good** people, people who remind me of my friends and teachers at Lighthouse who have stood by me for thirteen years."

- **Alberto, Lighthouse Class of 2016**

## Academic Program:

In order to prepare all of its students for college and the career of their choice, Lighthouse Community Charter School (LCCS) offers a rigorous, engaging, and innovative college preparatory curriculum. LCCS' educational program is grounded in the belief that students learn best when study is integrated with authentic experiences such as projects, performances, fieldwork, and interaction with experts from the community.

These learning experiences provide students at LCCS with the opportunity to apply their knowledge of key academic concepts and content in meaningful ways while developing strong habits of mind and heart. Students at LCCS are held to high academic expectations in all classes through a series of internal assessment measures including grades, portfolios, presentations, and interviews.

Each academic course at LCCS is designed to meet the California state standards and earn the approval of the University of California Regents. Lighthouse is accredited by the Western Association of Schools and Colleges (WASC).



### College Entrance Exams:

All students at Lighthouse are expected to take the SAT before December of their senior year. The figures below provide a snapshot of the SAT results for Lighthouse's graduating Class of 2015 as the data for the Class of 2016 is not yet complete and is a mix between the old and new SAT exams.

- Mean SAT Critical Reading Score: 452
- Mean SAT Math Score: 499
- Mean SAT Writing Score: 461

### College Going Culture:

Lighthouse is intent on ensuring that all of its students will attend some college after they graduate. In addition to our college preparatory curriculum, Lighthouse also provides full-time college and career counseling services, academic mentoring for current students and graduates, and an ongoing commitment to find programs and opportunities that enhance our students' ability to gain admission into college and thrive once there.

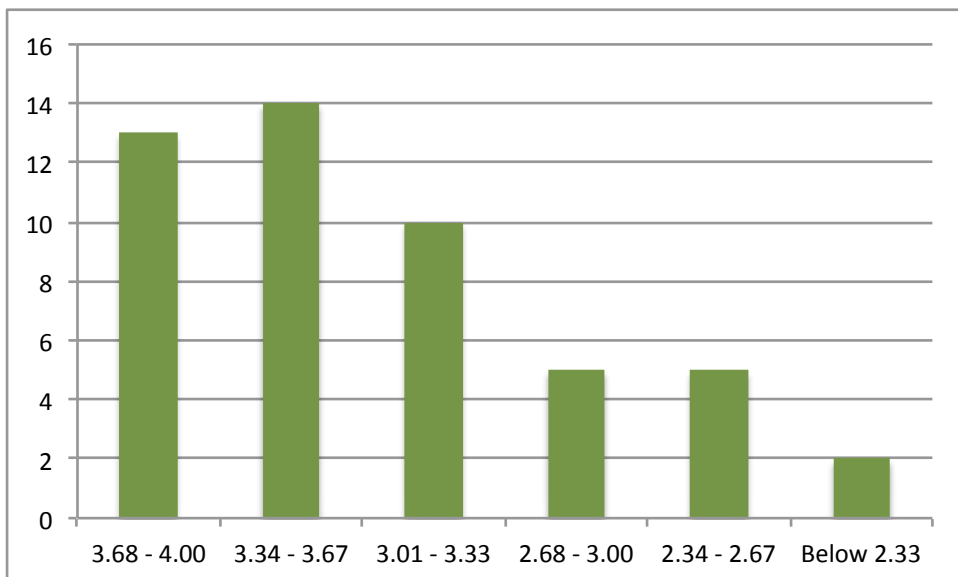
### Grade Distribution:

LCCS does not rank its students. As a small, academically demanding school where all students are expected to go on to college we are concerned that such rankings do not accurately reflect the potential of each of our students. In lieu of class rank, we have provided some basic information about grade distribution among our graduating seniors in the table below:

**"High expectations, academic rigor, and a genuine focus on the whole child blend together at Lighthouse Community Charter. The school provides an unparalleled educational program in an environment that respects and engages families and community."**  
- David Castillo, Regional Director,  
California Charter Schools Association

### Results:

Lighthouse graduates have been accepted to: Bates College, California College of the Arts, The California State Universities, Clark Atlanta University, Dominican University, Drexel University, Earlham College, DePaul University, Eckerd College, Evergreen State College, FIDM, George Mason University, University of Hartford, Holy Names University, Hope College, Howard University, Kalamazoo College, Loyola Marymount University, McDaniel College, Mills College, National Hispanic University, Notre Dame de Namur University, Occidental College, Pace University, Pepperdine University, Rhodes College, Saint Mary's College, SF Art Institute, Santa Clara University, Simmons College, Southern Methodist University, The Universities of California, University of Colorado, University of the Pacific, University of Portland, University of Puget Sound, University of San Francisco, USC, Whitman College, Whittier College, College of Wooster.



Cumulative (9-11) GPAs for Lighthouse's Class of 2017 - 49 Students Total

